

SA Government's STATE DROUGHT RESPONSE

2006 - 2011

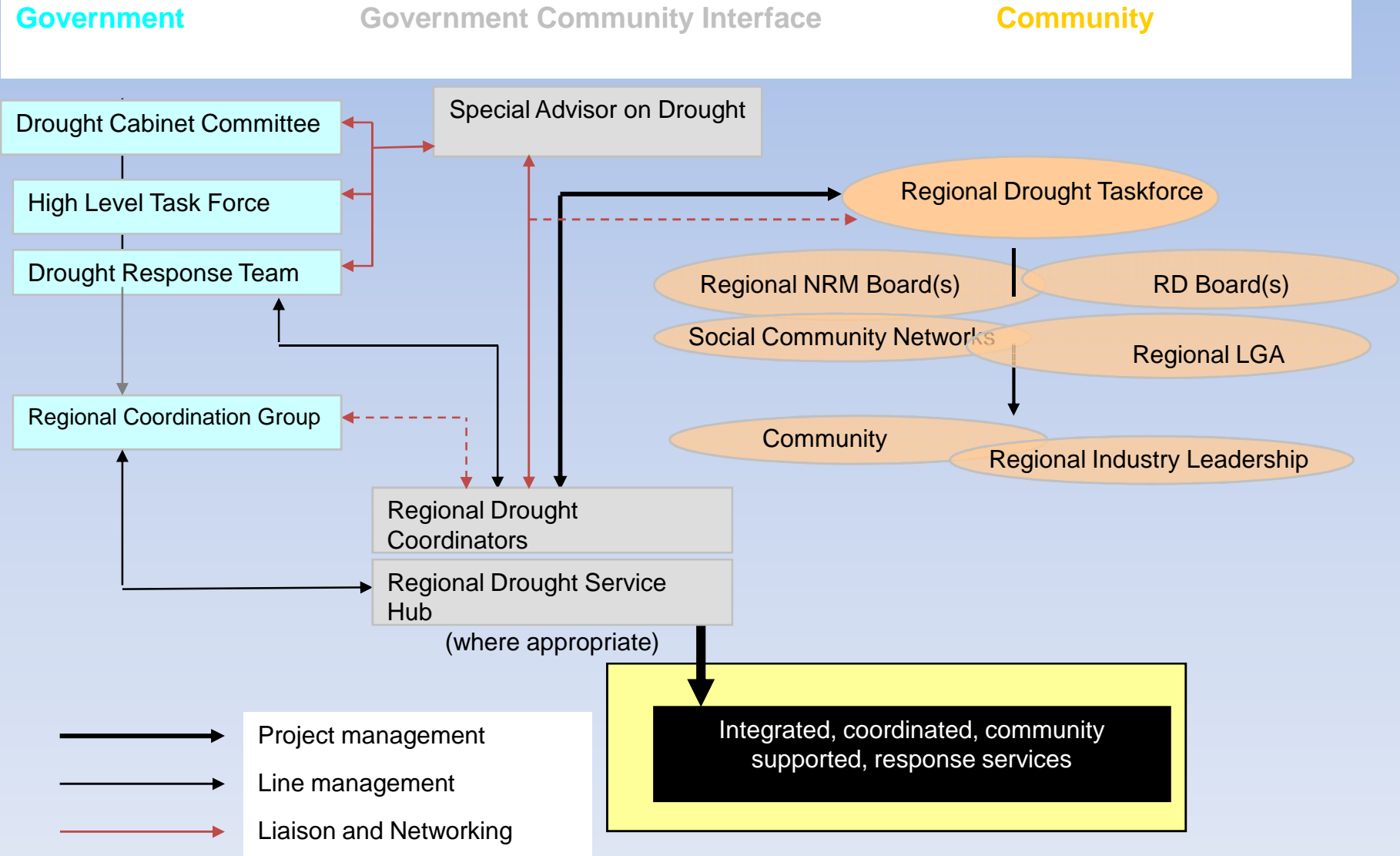


AS THINGS WERE DETERIORATING

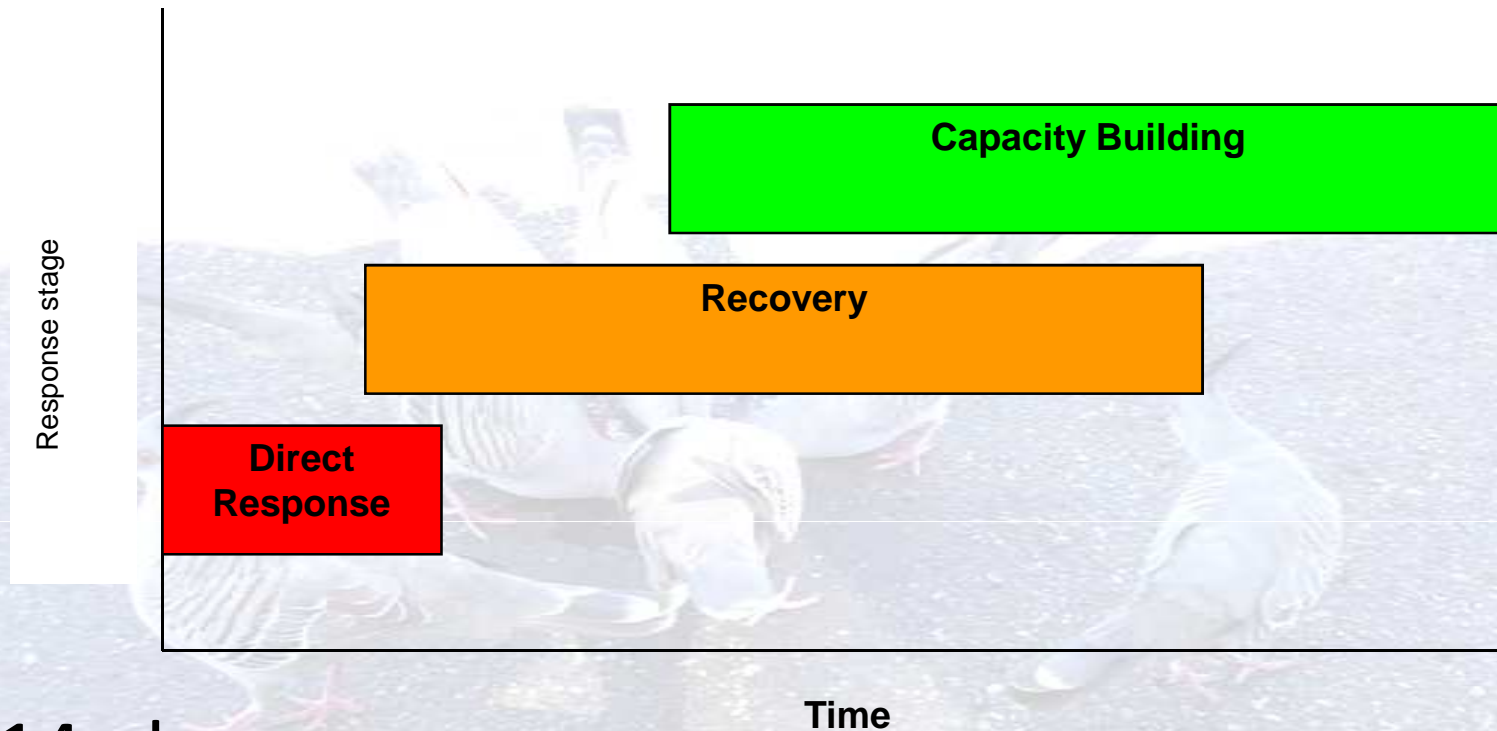
Cabinet's Instructions were to:

- **Coordinate a whole of Government response**
- **Deliver evidence based and innovative support**
- **Be responsive to regional needs**
- **Consistent with national Exceptional Circumstances policy and programs**

GOVERNMENT & COMMUNITY



PHASED AND ADAPTIVE APPROACH



- 14 phases
- From crisis to recovery to preparedness
- With cross agency action and collaboration
- Providing ready access to services and support

HOLISTIC SUPPORT

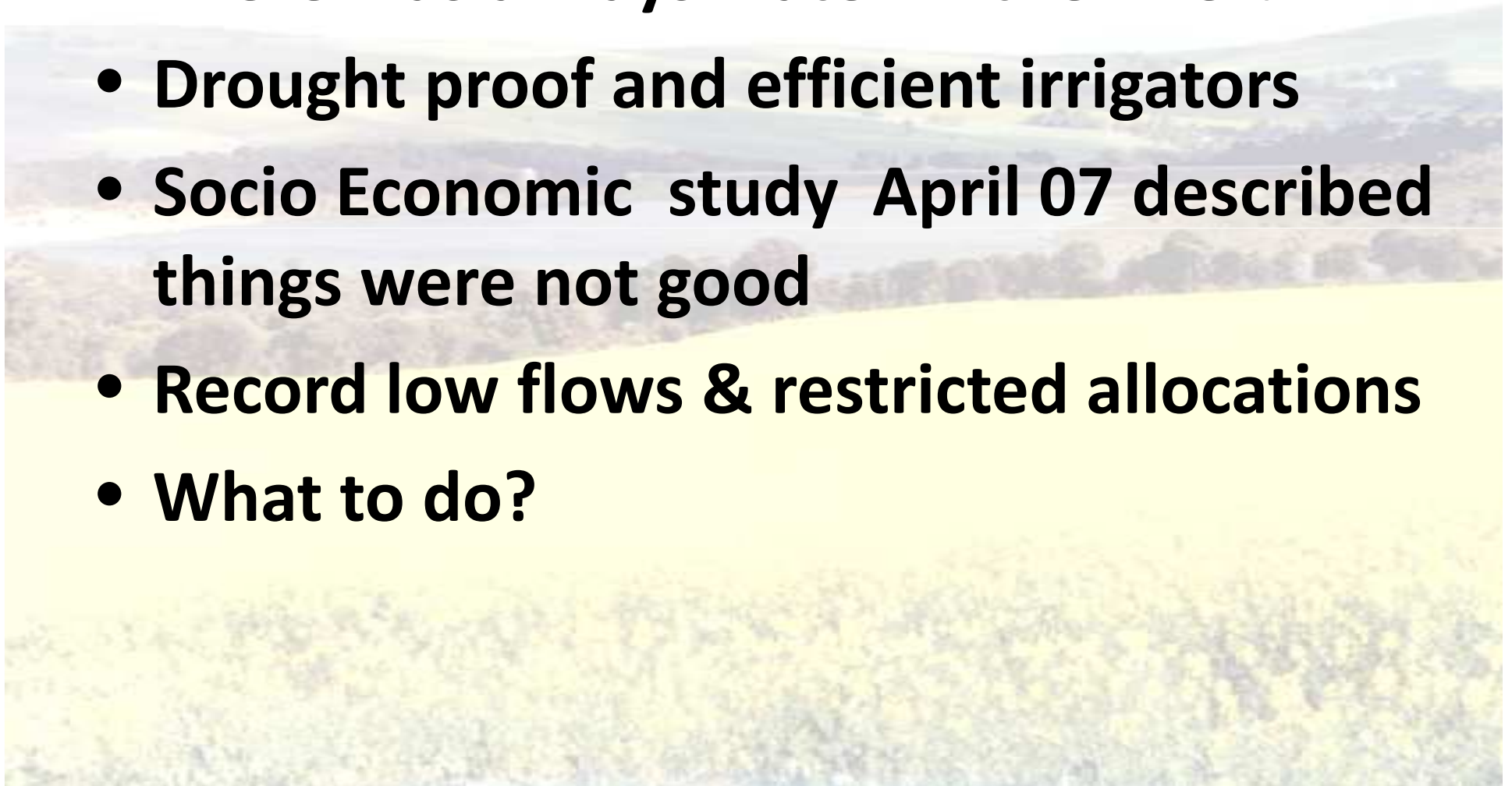
- Farm Business Support
- Family and Community Support
- Employment and Workforce

86% surveyed have already made changes to their business

Truscott's 2010

River Murray Corridor

- **There was always water in the river!**
- **Drought proof and efficient irrigators**
- **Socio Economic study April 07 described things were not good**
- **Record low flows & restricted allocations**
- **What to do?**



River Murray Corridor Support

- **Technical support**
- **Exceptional Circumstances Declaration**
- **Premiers Special Advisor**
- **Riverland Horticulture Reference Forum**
- **Lower Murray Drought Reference Group**

River Murray Corridor Programs

- Interest Rate Subsidies,
- Relief Payments,
- Exit Grants,
- Professional Advice and Planning Grants,
- Irrigation Management Grants
- Regional Coordinator,
- 'One Stop Shop',
- Financial Counselling,
- Health and Well Being Counselling and support,
- Alternative employment assistance
- Critical Water Allocations
- Information and decision support

KEY SUCCESSES



- **Mitigated impact on:**
 - State's agricultural food production
 - State's economy
 - Fabric of rural communities
 - Environment / landscape
- **Supported:**
 - Potential to recover
 - Rural communities
 - Regional capacity

